

CONTROLLED **M**ECHANICAL VENTILATION

CONTROLLED MECHANICAL VENTILATION

Decentralised residential controlled mechanical ventilation system

RECIRCULATION
OF THE AIR

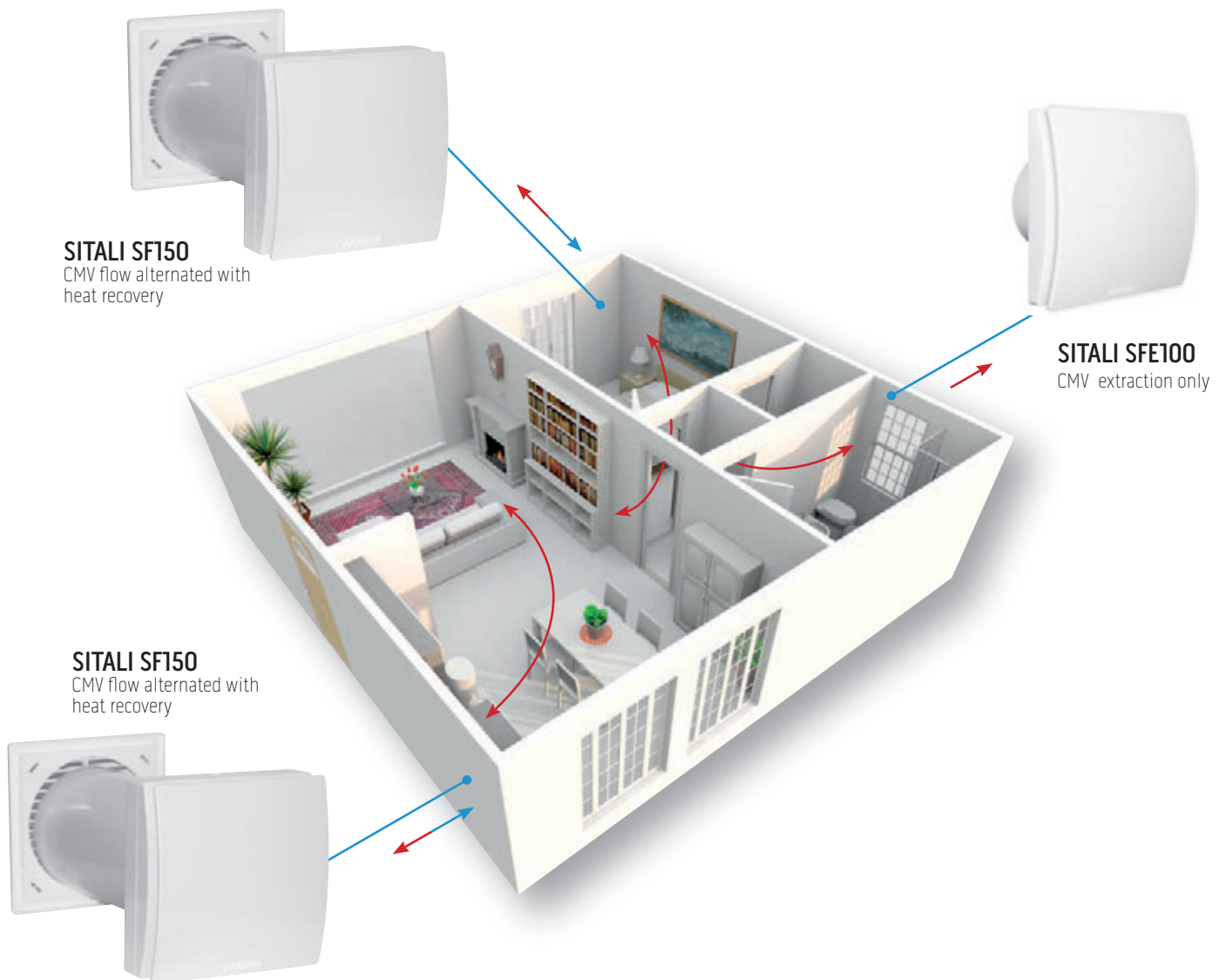
MOULD
PREVENTION

HUMIDITY
PREVENTION

ENERGY
SAVING

CLEAN AIR WITH MAXIMUM ENERGY SAVING SILENTLY

COMPLETE SYSTEM INSTALLATION




APPLICATION: SOLUTION RECOMMENDED IN CASE OF RESTRUCTURING.

System features:

- pair of decentralised CMV units (Sitali SF150) with alternate single flow with heat recovery unit that allows the transfer of the heat of the air from the indoor ambits to the cold air introduced from outdoors. The two units can be synchronised with each other with maximum acoustic comfort.
- They can be coupled with decentralised single flow CMV units (Sitali SFE100).
- They do not have to be connected to any internal air distribution network.
- Energy saving: the pre-heated external air, which is introduced into the indoor environments via the Sitali SF150 units, limits the necessity to solicit the heating system.
- The CMV units are fitted with EC brushless motorisation, with significantly reduced energy consumption.
- Quality of the Indoor Air: a mechanical ventilation system appropriately dimensioned guarantees constant quality of the indoor air for the well-being and health of the occupants and the building.
- Periodic maintenance of the anti-dust filter mounted on the Sitali SF150 units helps to maintain the indoor air healthier.
- The complete system requires cable connection between the various components

	CODE	DESCRIPTION
	99422	SITALI SFE100 CMV EXTRACTION ONLY
	B0837	KIT SITALI SFE100 PIPE
	B0838	KIT SITALI SFE100 GRID

	CODE	DESCRIPTION
	99431	SITALI SF150 CMV FLOW ALTERNATED WITH HEAT RECOVERY



QUALITY OF THE AIR

an appropriately dimensioned mechanical ventilation system guarantees the constant quality of the indoor air for the well-being and health of the occupants and the building. Periodic maintenance of the anti-dust filter mounted on the Sitali SF150 units helps to maintain the indoor air healthier.



ENERGY SAVING

The Sitali SFE100/SF150 units are fitted with EC brushless motorisation, with significantly reduced energy consumption. Through the pre-heated outdoor air that is introduced into the indoor environments, the Sitali SF150 unit, limits the need to solicit the heating system.



SILENT SYSTEM

The units can be synchronised with each other in maximum acoustic comfort and are optimised for continuous 24/24h operation.

SITALI SFE 100

SITALI SFE 100 Cod. 99422

Continuous single flow decentralised **C**ontrolled **M**echanical **V**entilation



FEATURES

- Top quality ABS structure
- High-efficiency aerodynamic fan
- EC brushless motor with thermal protection
- integrated humidity sensor
- Elegant design with minimalist lines
- Front cover; easy to remove for cleaning, without the use of tools
- Aerodynamic deflectors
- Very low energy consumption
- 4 ventilation speeds available



SILENT FUNCTION

The most silent: only **11 dB (A)**
Optimised for continuous 24/24h operation.



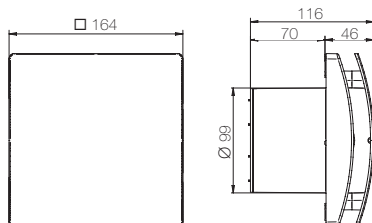
VENTILATION

Decentralised CMV unit with continuous single flow, Ø100 mm, with very low energy consumption, for replacing stale air in the humid environments with maximum acoustic comfort. Ideal for preventing problems of condensate and mould, which inevitably damage the structure and compromise the health of the occupants.



HUMIDITY DETECTION

The unit is fitted with a humidity detection sensor, adjustable from 50% to 95% R.H. and a timer; this can be adjusted from 0 to approx. 30 minutes. The unit operates continuously at the minimum speed selected, which increases automatically to the average speed when the R.H. percentage exceeds the threshold set.



TECHNICAL DATA	SFE 100
Product code	99422
Hole diameter mm	100
Flow rate m ³ /h	83 / 47 / 29 / 21
Consumption W	2,5 / 1,7 / 1,2 / 1
Sound pressure db(A)*	26 / 23 / 13 / 11
Environment temperature °C max	50
IP protection rating	IPX4
Weight kg	0,6

220-240 V ~ 50-60Hz aeraulic performance measured according to ISO 5801 at 230V 50Hz, density of the air 1.2 Kg/m³ - data measured in accredited TÜV Rheinland laboratory
* sound pressure level at 3m in free field

SITALI SF 150

SITALI SF 150 Cod. 99431

Alternate single flow decentralised **C**ontrolled **M**echanical **V**entilation with heat recovery



FEATURES

Temperature probe that adjusts the air flow inversion times to maintain the indoor comfort level

Energy class: **A**

EC brushless motor

Integrated humidity sensor

Easy maintenance, indoor magnetic release

Infra-red remote control with LCD

Double filter on the inner/outer side of the exchanger

Multicolour LED indicator

5 ventilation speeds available

Magnetic wall support for remote control



SILENT FUNCTION

The most silent: only **10-dB (A)**
Optimised for continuous 24/24h operation.



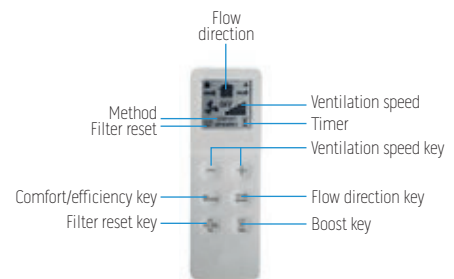
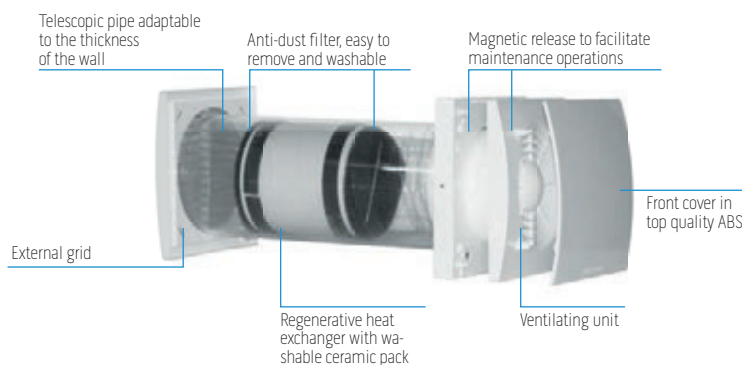
INTELLIGENT FUNCTION

Thanks to the presence of the temperature detection probe, the air flow inversion time is self-adjusted to allow the best comfort indoors.



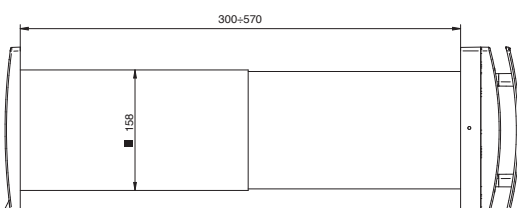
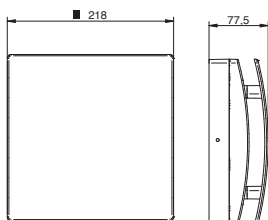
MAGNETIC FUNCTION

Quick release via magnets for easy maintenance without the need for specialised staff.



TWO METHODS

Comfort: best acoustic comfort for use during the night
Efficiency: best efficiency at maximum power



TECHNICAL DATA	SF 150
Product code	99431
Hole diameter mm	150
Energy class	A
Flow rate aria m ³ /h	60 / 50 / 40 / 30 / 20
Sound pressure db(A)*	29 / 24 / 20 / 14 / 10
Consumption W	6 / 4,5 / 3,5 / 2,5 / 2
Termal efficiency max	82%
Environment temperature °C max	-20°C +50°C
IP protection rating	IPX4
Weight kg	5,5

220-240 V ~ 50-60Hz aeruic performance measured according to ISO 5801 at 230V 50Hz, density of the air 1.2 Kg/m³ - data measured in accredited TÜV Rheinland laboratory * sound pressure level at 3m in free field